

# EK180

## HYDRAULIC PILING RIG

---



NEW PRODUCT



# GEAX EK180

## PURE POWER

### HIGH PRODUCTIVITY

Thanks to an efficiently engineered hydraulics with high quality components and a powerful last generation engine, the EK180 offers superior performance relative to the size, while keeping very low running costs.

### UNIQUE ARCHITECTURE

Like all Geax machines, the EK180 is provided with a long boom supporting the sliding mast. This allows a great variety of tool positioning for drilling like: long reach drilling, low headroom and maximized tool height for casing. The mast folding system is patented.

### MANEUVERABILITY

With its mast architecture and proverbial stability, the EK180 can drill in any site including slopes, uneven terrains, and tight spaces. The higher maneuverability allows fast movements compared to a traditional rig.

### VERSATILITY

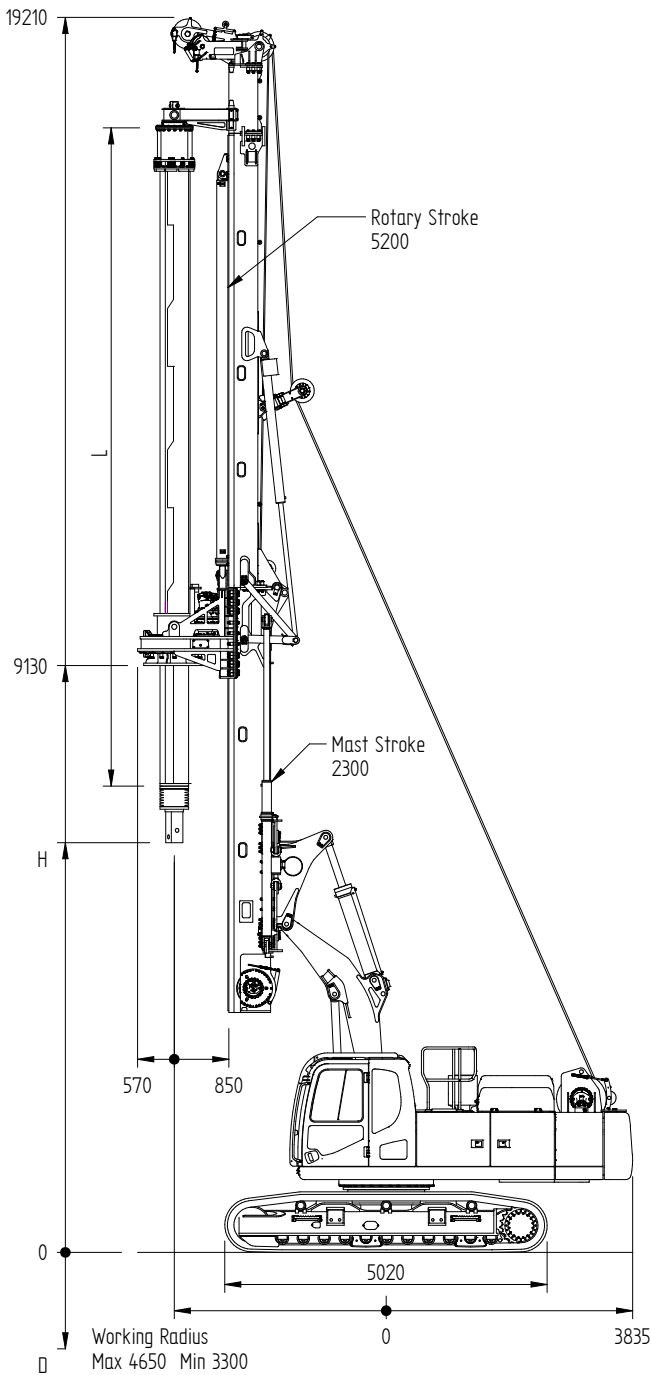
The EK180 can easily be converted in other drilling modes with modular kits. Common set-ups are kelly drilling and CFA, but many others are possible like diaphragm walls, soil mixing, soil displacement hydraulic hammer and customized set-up.



#### KELLY BAR OPTIONS

n° elements x m		Depth	H
5 x 8	m - ft	36 - 118	8.57 - 28.1
5 x 9	m - ft	41 - 134.5	7.57 - 24.8
5 x 10	m - ft	46 - 151	6.57 - 21.5
5 x 11	m - ft	51 - 167	5.57 - 18.2
5 x 12	m - ft	56 - 184	4.57 - 15

All kelly bars are round interlocking  
Friction kelly and custom measures available upon request



## TECHNICAL DATA SHEET



#### BASE CARRIER

Engine	type	DL08V
Exhaust emission	EU	Stage V
	EPA	Tier4f
Engine power	kW (hp)	202 (271)
Main pumps	l/min	2x248
Hydraulic pressure	bar	350



#### MAST

Forward tilt	deg	>10
Backward tilt	deg	>10
Lateral tilt	deg	± 5.5
Mast vertical stroke	mm - ft	2.300 - 7.5



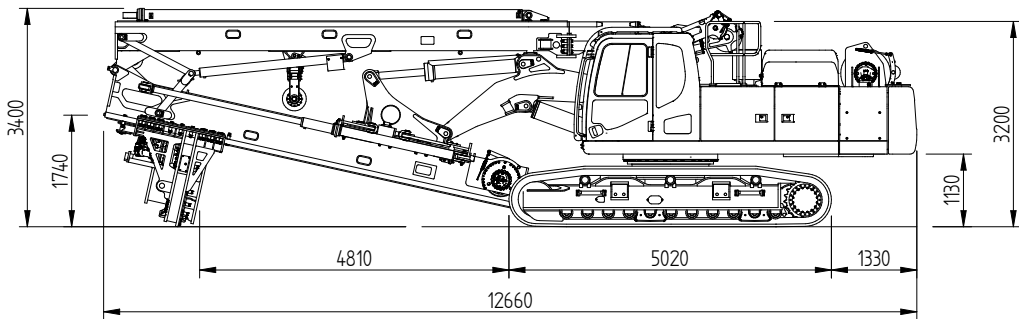
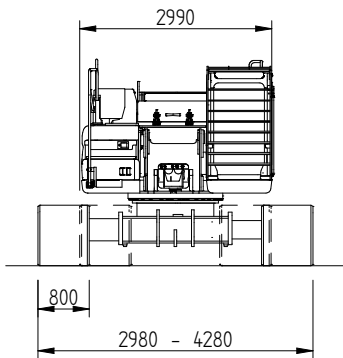
#### WINCHES

		KELLY	CFA
Main winch line pull (1st layer)	kN - lbf	170 - 38.220	Coming soon
Aux winch line pull (1st layer)	kN - lbf	90 - 20.230	Coming soon



#### DRILLING

		KELLY	CFA
Max pile diameter (front mast)	mm - in	1.600 - 63	Coming soon
Max pile diameter (under mast) <sup>1</sup>	mm - in	2.500 - 98	Coming soon
Std pile depth	m - ft	40 - 130	Coming soon
Max pile depth	m - ft	60 - 196	Coming soon
Rotary stroke on mast	mm - ft	5.200 - 17	Coming soon
Total rotary stroke	mm - ft	7.500 - 24.6	Coming soon



- Values are effective except where otherwise specified.
- Technical data are provided as indicative information only, they are subject to change without prior notice.



#### UNDERCARRIAGE

Tracks width	mm - ft	2.980/4.280 - 9.8/14
Tracks length	mm - ft	5.020 - 16.5
Track shoes	mm - ft	800 - 2.62
Tail radius	mm - ft	3.835 - 12.5



#### ROTARY HEAD

Torque (nominal)	kNm - lbf ft	180 - 132.760
Drilling speed	rpm	10 - 35
Spin-off speed	rpm	70



#### CROWD SYSTEM

		KELLY	CFA
Pull down force	kN - lbf	235 - 52.830	Coming soon
Extraction force	kN - lbf	220 - 49.450	Coming soon



#### TRANSPORT

		KELLY	CFA
Length	mm - ft	12.660 - 41.5	Coming soon
Width	mm - ft	2.990 - 9.8	Coming soon
Height	mm - ft	3.400 - 11.15	Coming soon
Weight w/o kelly bar	kg - lbs	52.000 - 114.640	Coming soon
Operating weight	kg - lbs	from 57.500 - 126.760	Coming soon

NOTES: 1. Recommended



WWW.GEAX.IT  
email: [info@geax.it](mailto:info@geax.it)  
tel: +39 0717131953

GEAX srl  
Contrada Passatempo 19  
Montefano (MC) ITALY