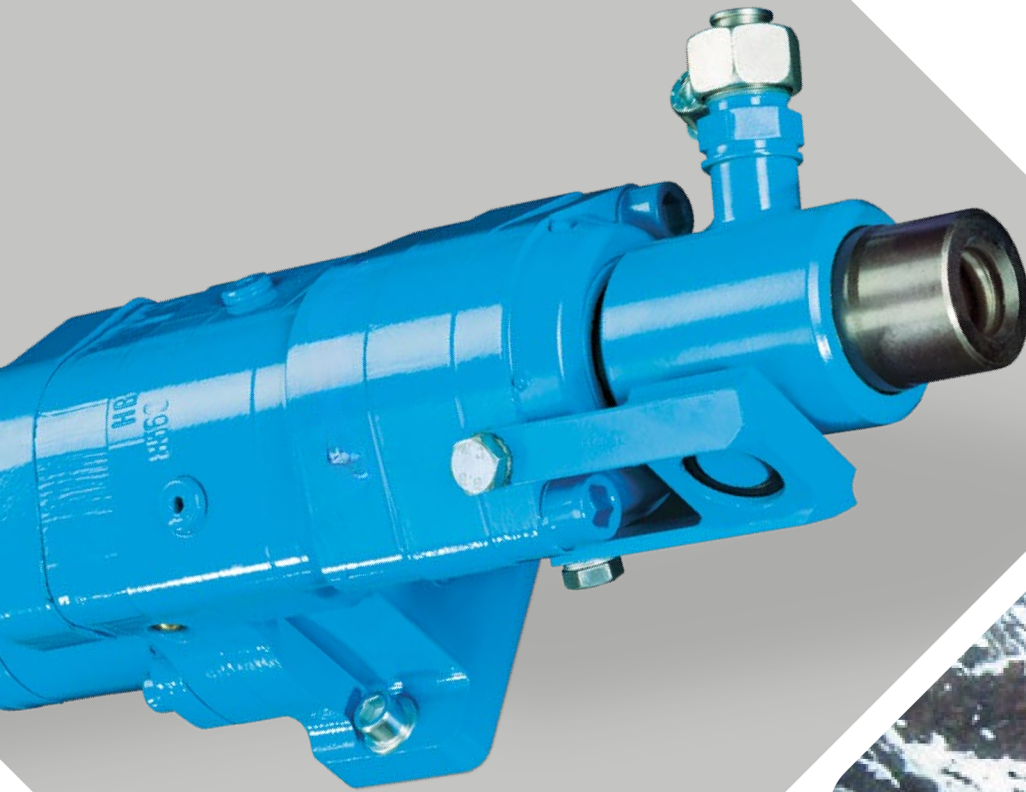


terra
infrastructure

safety: efficient and sustainable



DRIFTER
HB5

Drifter HB5

HB5 is a small-size Drifter (top-hammer) especially developed for:

- Micropile drilling up to a casing diameter of 3 inch (ø76 mm)
- Threaded hollow bar drilling (self-drilling anchors) up to a bar diameter of 1.5 inch (ø40 mm)
- Blast hole drilling up to a hole diameter of 2 inch (ø50 mm)

HB5 has a standard built-in hydraulic damping mechanism to avoid blank impacts and to allow percussion during retraction of casings.

HB5 offers a version without hydraulic damping mechanism, mainly for the use in quarries.

HB5 offers 4 different motors (75 ccm, 100 ccm, 160 ccm, 370 ccm).

Percussion Unit

Operating pressure (kp/cm ²)	160 - 180 bar
Oil flow rate (l/min)	50 - 60 lpm
Impact rate Single (min ⁻¹)	(50 Hz) 3,000 bpm
impact energy (Joule)	140 Nm

Shank Adaptors (Striker Bars)

Male thread	R25 left R32 left R38 left
Female thread	R25 left R32 left R38 left T38 left
	Titan 30/11 left 40/16 left

OPTIONS

- External flushing head for casings and self-drilling hollow bars
- Integrated flushing through extended shank adaptor (striker bar)
- Drifter version without hydraulic damping mechanism available

Rotary Drives

Motor-Version 75 ccm

Pressure at rotary drive		100 bar				130 bar				155 bar				165 bar			
Gear					1 st				1 st				1 st				1 st
Oil flow rate (lpm)	30	Torque (Nm)			100				130				150				160
		Speed (rpm)			362				350				338				325
45	Torque (Nm)			100				130				150				160	
	Speed (rpm)			543				526				506				488	
57	Torque (Nm)			100				130				150				160	
	Speed (rpm)			888				666				642				615	

■ Intermittend mode (max. 10% per minute)

Motor-Version 100 ccm

Pressure at rotary drive		70 bar				100 bar				130 bar				155 bar			
Gear					1 st				1 st				1 st				1 st
Oil flow rate (lpm)	30	Torque (Nm)			90				130				170				200
		Speed (rpm)			289				280				271				261
45	Torque (Nm)			90				130				170				200	
	Speed (rpm)			434				420				406				392	
57	Torque (Nm)			90				130				170				200	
	Speed (rpm)			550				532				515				496	

■ Intermittend mode (max. 10% per minute)

Motor-Version 160 ccm

Pressure at rotary drive		70 bar				100 bar				130 bar				155 bar			
Gear					1 st				1 st				1 st				1 st
Oil flow rate (lpm)	30	Torque (Nm)			150				210				270				320
		Speed (rpm)			176				170				164				158
45	Torque (Nm)			150				210				270				320	
	Speed (rpm)			263				255				246				237	
57	Torque (Nm)			150				210				270				320	
	Speed (rpm)			333				323				312				301	

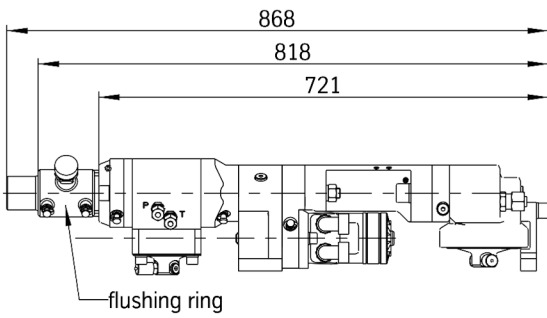
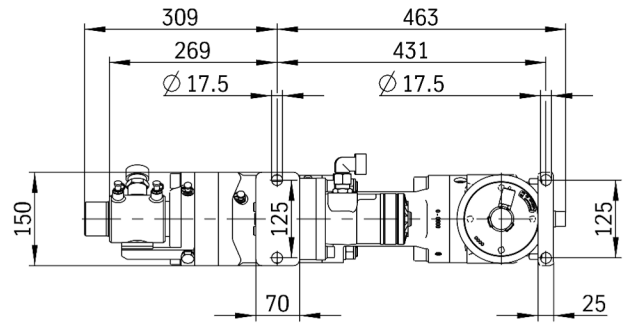
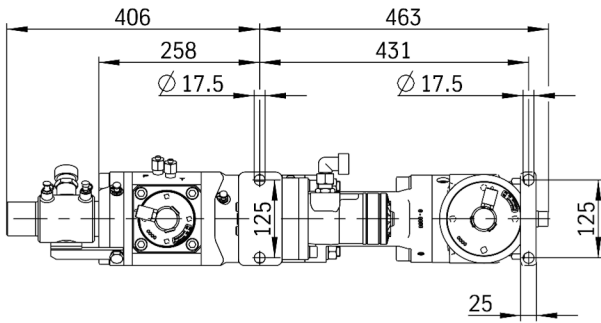
■ Intermittend mode (max. 10% per minute)

Motor-Version 370 ccm

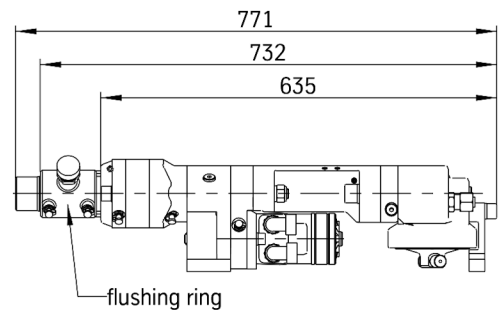
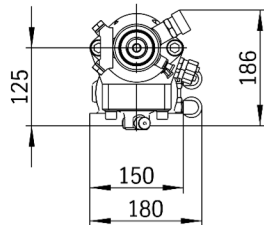
Pressure at rotary drive		30 bar				40 bar				70 bar				100 bar			
Gear					1 st				1 st				1 st				1 st
Oil flow rate (lpm)	30	Torque (Nm)			150				190				330				480
		Speed (rpm)			81				78				78				78
45	Torque (Nm)			150				190				330				480	
	Speed (rpm)			122				118				118				118	
57	Torque (Nm)			150				190				330				480	
	Speed (rpm)			154				149				149				149	

■ Intermittend mode (max. 10% per minute)

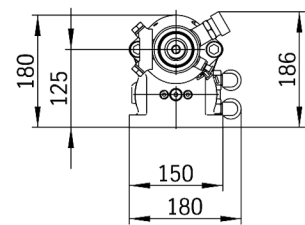
Dimensions

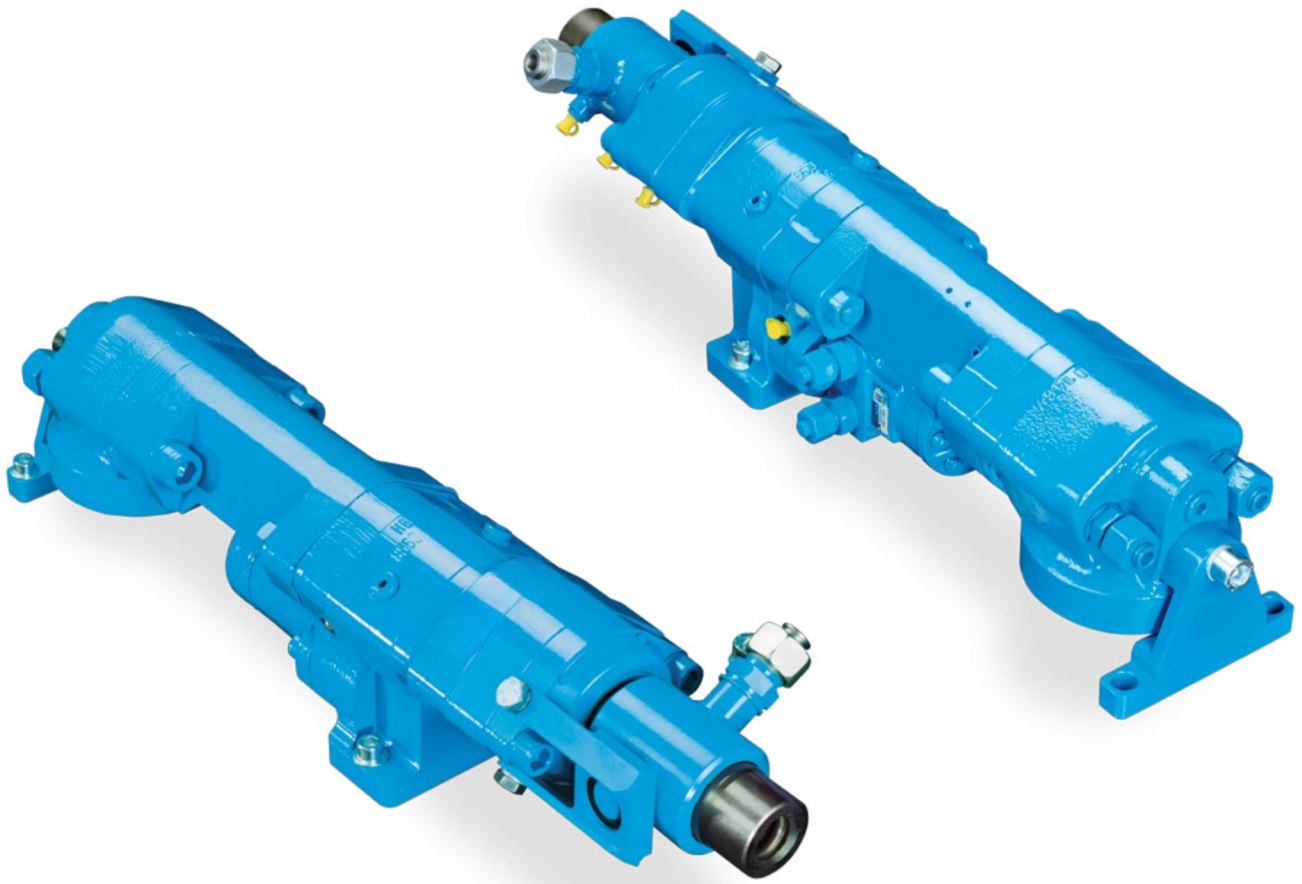


weight approx. 70 kg
retraction force max. 33 kN



weight approx. 60 kg
retraction force max. 33 kN





HB5 drilling in a granite quarry



HB5 nailing in the mountains

terra infrastructure GmbH, Alte Liederbacher Straße 6, 36304 Alsfeld, Germany
P: +49 6631 781-0
sales.drilling@terra-infrastructure.com | www.terra-infrastructure.com

Australia

terra infrastructure Pty Ltd, 11 Woodford Pl, Thornton NSW 2322, Australia
P: +61 2 8448-3555
info.anz@terra-infrastructure.com
www.terra-infrastructure.com.au

New Zealand, Pacific Islands

terra infrastructure Pty Ltd, 180 Fred Taylor Drive, Whenuapai Auckland 0814, New Zealand
P: +64 9 416-8891
info.anz@terra-infrastructure.com
www.terra-infrastructure.co.nz

Baltic States

terra infrastructure UAB, Liepų g. 83, 93269 Klaipėda, Lithuania
P: +370 46 355-401
www.terra-infrastructure.com/lt

Russian Federation

OOO terra infrastructure, Bolshevikov Str. 54 B, Office 211, 193315 St. Petersburg, Russia
P: +7 812 337-6510
www.terra-infrastructure.com/ru



terra
infrastructure