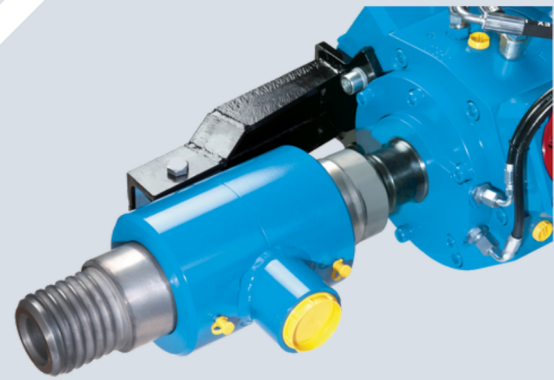
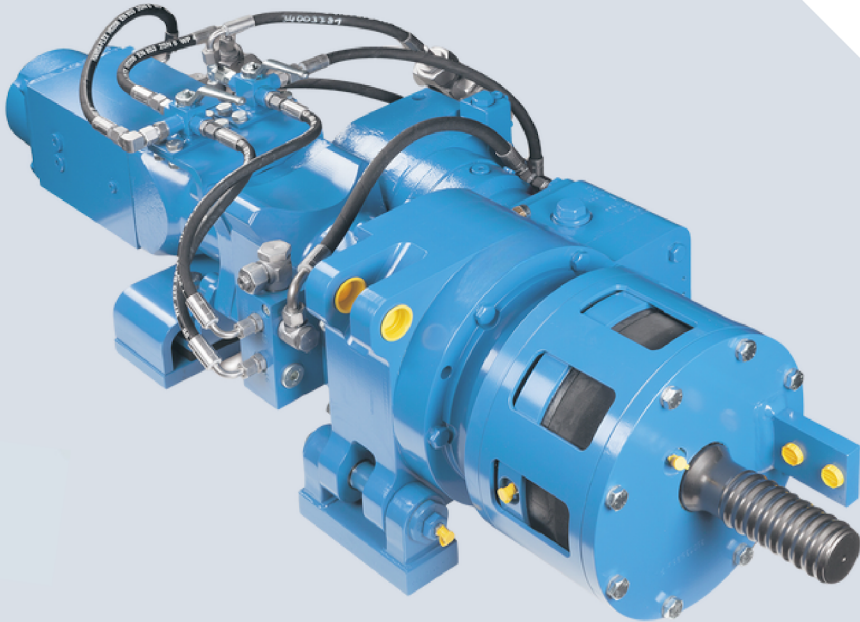


terra
infrastructure

safety: efficient and sustainable



DRIFTER
HB32

DRIFTER HB32

HB32 is a mid-size Drifter (top-hammer) especially developed for:

- Micropile drilling up to a casing diameter of 5 inch (ø133 mm)
- Threaded hollow bar drilling (self-drilling anchors) up to a bar diameter of 3 inch (ø75 mm)
- Auger drilling (CFA) up to an auger diameter of 16 inch (ø400 mm)
- Blast hole drilling up to a hole diameter of 4 inch (ø100 mm)

HB32 has a standard built-in rubber damping mechanism to avoid blank impacts and to allow percussion during retraction of casings and augers.

HB32 achieves an optimal drilling performance in different types of soil by adjusting the impact frequency and the impact energy, therefore 2 different impact frequencies and impact energies are available.

HB32 offers 3 different ways to switch between the percussion mechanism and the speed of the rotary drive, either electrically or hydraulically or manually (by hand) and it offers 4 different high-speed and high-pressure motors (344 ccm, 480 ccm, 677 ccm, 940 ccm).

Percussion Unit for Anchor Drilling

Operating pressure (kp/cm ²)	170 - 190 bar
Oil flow rate (l/min)	70 - 85 lpm
Impact rate (min ⁻¹)	(30 42 Hz) 1,800 2,500 bpm
Single impact energy (Joule)	400 340 Nm

Percussion Unit for Rock Drilling

Operating pressure Oil (kp/cm ²)	170 - 190 bar
flow rate (l/min)	70 - 85 lpm
Impact rate (min ⁻¹)	(40 50 Hz) 2,400 3,000 bpm
Single impact energy (Joule)	350 280 Nm

Shank Adaptors (Striker Bars)

Male thread	C64 left C64 right R55(H55) left R55(H55) right
Male thread with flushing	T45 left T51 left
Special thread	88.9 con. male 101.6 con. male + T38 female left
Special thread	WAF 1 5/8"

OPTIONS

- External flushing head for casings and self-drilling hollow bars
- Integrated flushing through shank adaptor (striker bar)
- Built-in RPM sensor with external box for speed indication
- In the drilling axis freely slideable (60 mm)
- Drifter version without damping mechanism
- Motor position could be on the left side or on top (right side position is not possible)

Rotary Drives

Motor-Version HP344 ccm

Pressure at rotary drive		170 bar			200 bar			240 bar			280 bar		
Gear		2 nd	1 st	2 nd	1 st	2 nd	1 st	2 nd	1 st	2 nd	1 st		
Oil flow rate (lpm)	60	Torque (Nm)	1,300	2,000	1,600	2,400	1,900	2,900	2,200	3,400			
		Speed (rpm)	112	75	112	75	112	75	112	75			
	120	Torque (Nm)	1,000	1,900	1,200	2,300	1,500	2,700	1,900	3,200			
		Speed (rpm)	225	150	225	150	225	150	225	150			
	170	Torque (Nm)	800	1,600	1,100	2,000	1,400	2,400	1,700	3,000			
		Speed (rpm)	318	212	318	212	318	212	318	212			

1st gear, 2nd gear (2-speed mode)

Motor-Version HP480 ccm

Pressure at rotary drive		170 bar			200 bar			240 bar			280 bar		
Gear		2 nd	1 st	2 nd	1 st	2 nd	1 st	2 nd	1 st	2 nd	1 st		
Oil flow rate (lpm)	60	Torque (Nm)	1,800	2,800	2,200	3,400	2,600	4,000	3,100	4,800			
		Speed (rpm)	80	54	80	54	80	54	80	54			
	120	Torque (Nm)	1,300	2,500	1,700	3,100	2,100	3,800	2,600	4,500			
		Speed (rpm)	161	107	161	107	161	107	161	107			
	170	Torque (Nm)	1,100	2,200	1,500	2,800	1,900	3,400	2,400	4,100			
		Speed (rpm)	228	152	228	152	228	152	228	152			

1st gear, 2nd gear (2-speed mode)

Motor-Version HP677 ccm (standard)

Pressure at rotary drive		170 bar			200 bar			240 bar			280 bar		
Gear		2 nd	1 st	2 nd	1 st	2 nd	1 st	2 nd	1 st	2 nd	1 st		
Oil flow rate (lpm)	60	Torque (Nm)	2,500	4,000	3,100	4,800	3,700	5,700	4,400	6,700			
		Speed (rpm)	57	38	57	38	57	38	57	38			
	120	Torque (Nm)	1,800	3,600	2,400	4,400	3,000	5,300	3,600	6,300			
		Speed (rpm)	114	76	114	76	114	76	114	76			
	170	Torque (Nm)	1,600	3,100	2,200	3,900	2,700	4,800	3,400	5,800			
		Speed (rpm)	162	108	162	108	162	108	162	108			

1st gear, 2nd gear (2-speed mode)

Motor-Version HP940 ccm

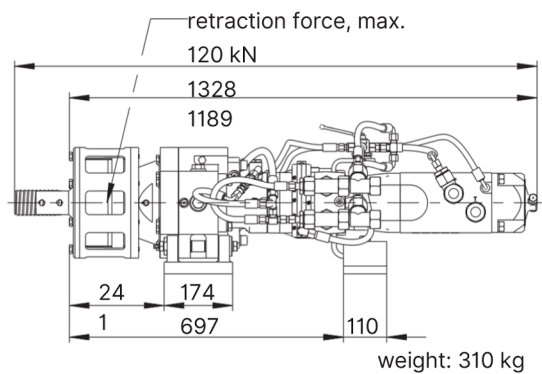
Pressure at rotary drive		170 bar			200 bar			240 bar					
Gear		2 nd	1 st	2 nd	1 st	2 nd	1 st	2 nd	1 st				
Oil flow rate (lpm)	60	Torque (Nm)	3,500	5,500	4,300	6,700	4,900	7,600					
		Speed (rpm)	41	27	41	27	41	27					
	120	Torque (Nm)	2,500	4,900	3,300	6,200	3,900	7,000					
		Speed (rpm)	82	55	82	55	82	55					
	170	Torque (Nm)	2,200	4,200	3,000	5,500	3,600	6,300					
		Speed (rpm)	116	78	116	78	116	78					

1st gear, 2nd gear (2-speed mode)

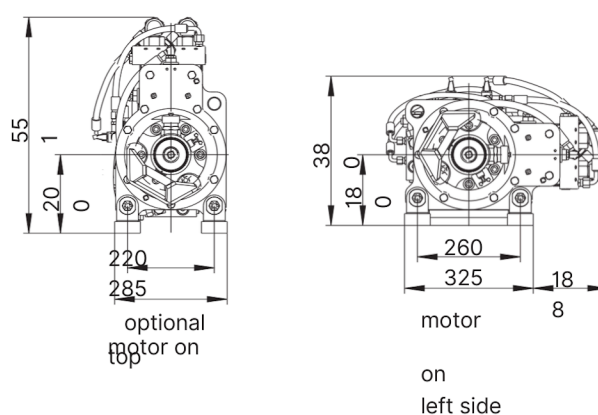
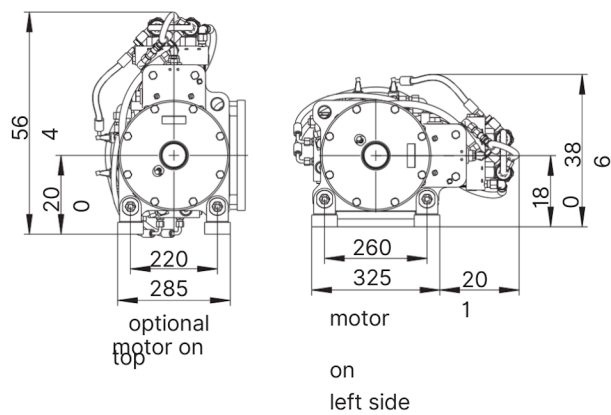
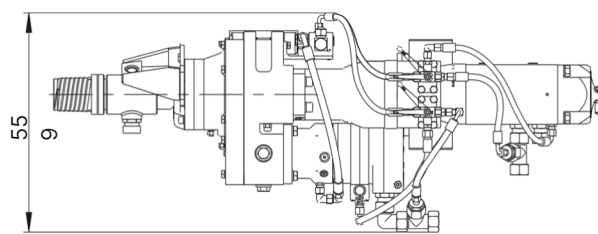
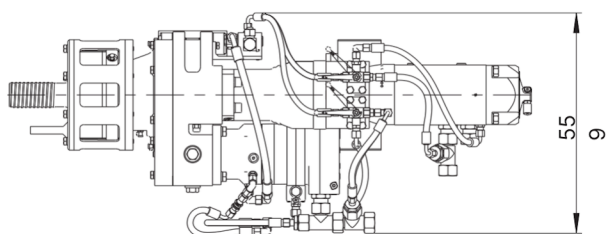
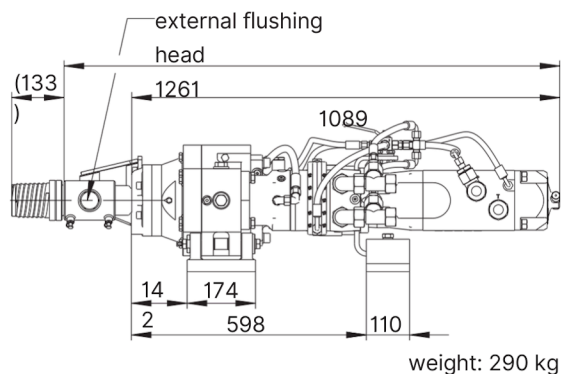
■ Intermittend mode (max. 10% per minute)

Dimensions

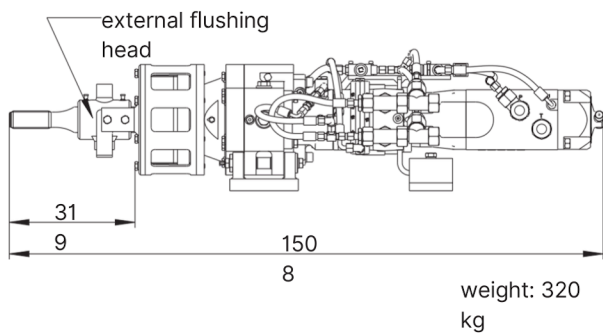
with rubber damping mechanism

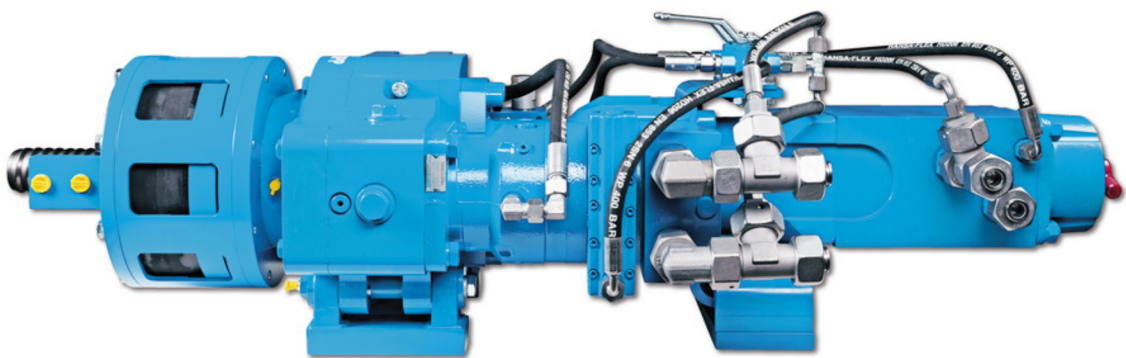
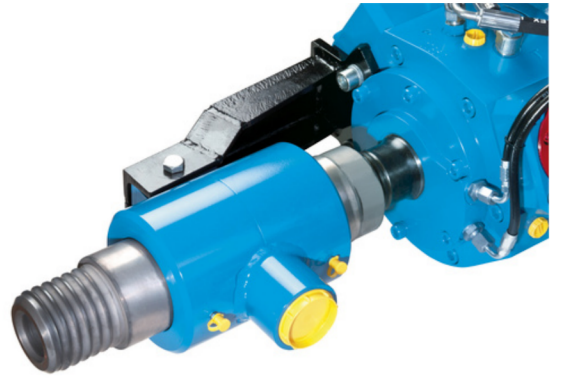
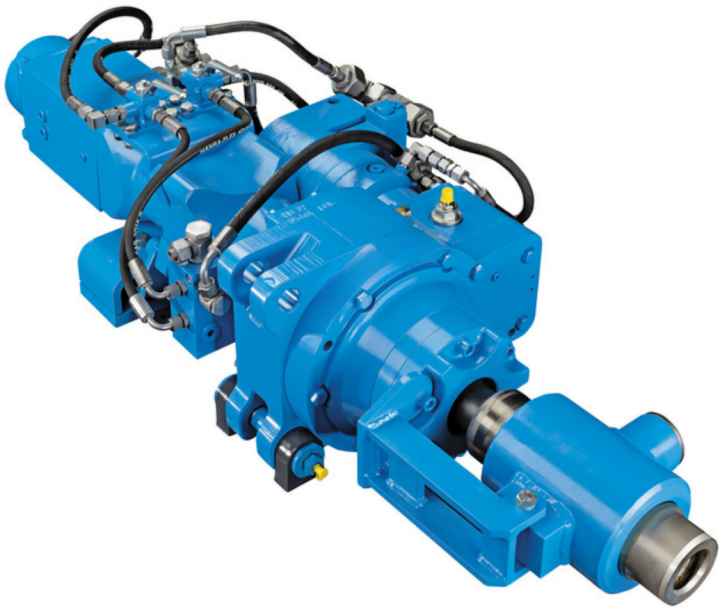
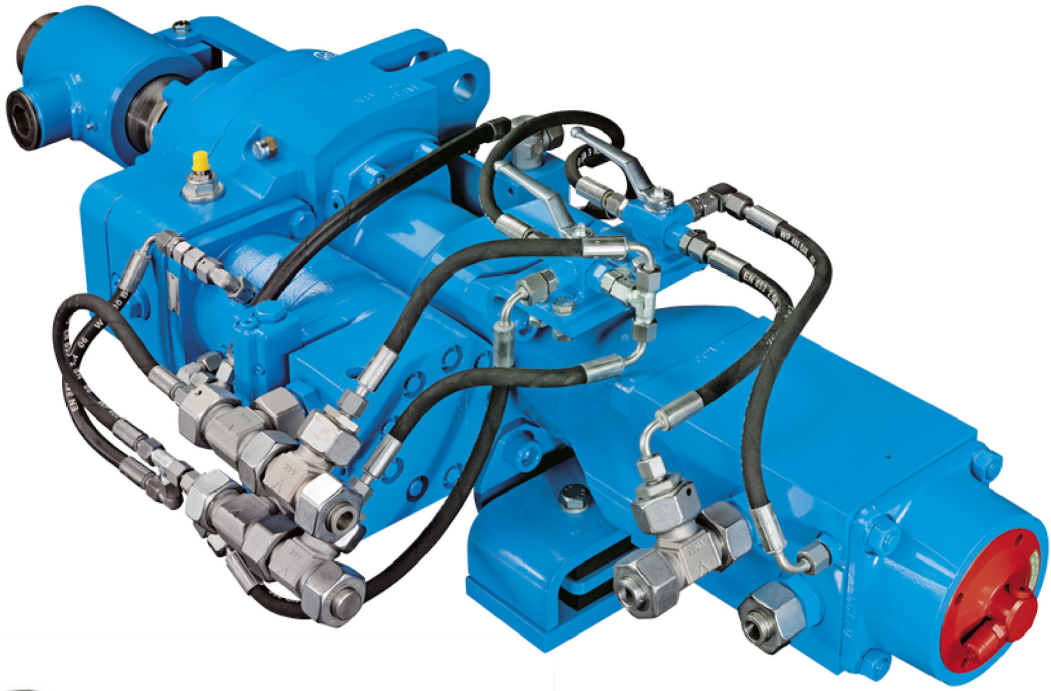


with external flushing head



with rubber damping mechanism & external flushing head





terra infrastructure GmbH, Alte Liederbacher Straße 6, 36304 Alsfeld, Germany
P: +49 6631 781-0
sales.drilling@terra-infrastructure.com | www.terra-infrastructure.com

Australia

terra infrastructure Pty Ltd, 11 Woodford Pl, Thornton NSW 2322, Australia
P: +61 2 8448-3555
info.anz@terra-infrastructure.com
www.terra-infrastructure.com.au

New Zealand, Pacific Islands

terra infrastructure Pty Ltd, 180 Fred Taylor Drive, Whenuapai Auckland 0814, New Zealand
P: +64 9 416-8891
info.anz@terra-infrastructure.com
www.terra-infrastructure.co.nz

Baltic States

terra infrastructure UAB, Liepų g. 83, 93269 Klaipėda, Lithuania
P: +370 46 355-401
www.terra-infrastructure.com/lt

Russian Federation

OOO terra infrastructure, Bolshevikov Str. 54 B, Office 211, 193315 St. Petersburg, Russia
P: +7 812 337-6510
www.terra-infrastructure.com/ru



terra
infrastructure