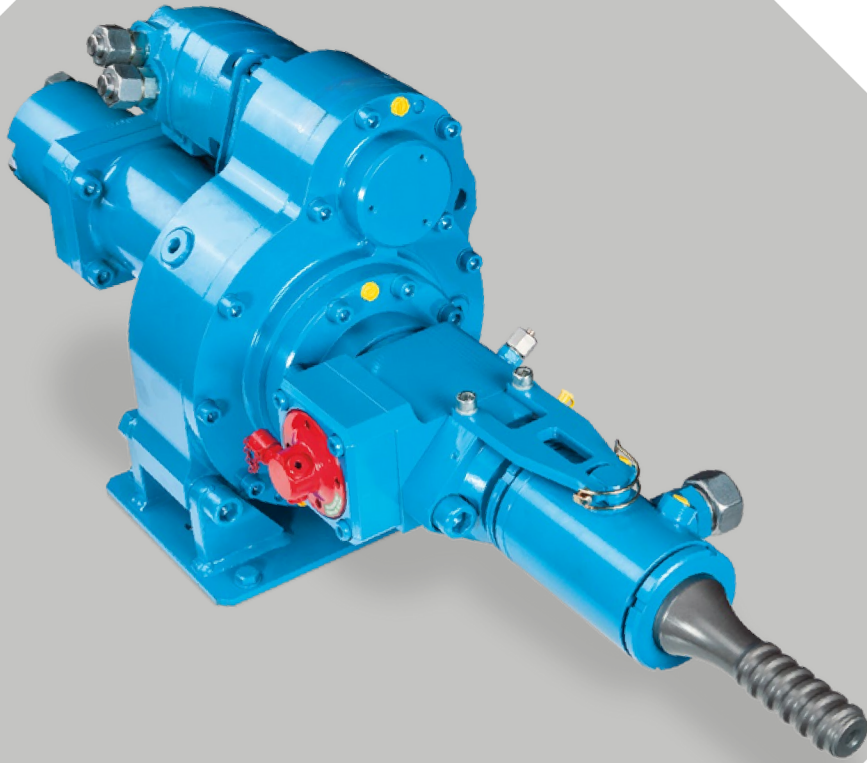


terra  
infrastructure

safety: efficient and sustainable



DRIFTER  
HB15

# Drifter HB15

HB15 is a small-size Drifter (top-hammer) especially developed for:

- Micropile drilling up to a casing diameter of 4 inch (ø101.6 mm)
- Threaded hollow bar drilling (self-drilling anchors) up to a bar diameter of 2 inch (ø50 mm)
- Blast hole drilling up to a hole diameter of 3 inch (ø75 mm)

HB15 has a standard built-in hydraulic damping mechanism to avoid blank impacts and to allow percussion during retraction of casings.

HB15 offers a version without hydraulic damping mechanism, mainly for the use in quarries.

HB15 achieves an optimal drilling performance in different types of soil by exchanging the percussion unit, from 50 Hz to 60 Hz and vice versa.

HB15 offers 4 different motors (110 ccm, 160 ccm, 245 ccm, 310 ccm).

## Percussion Unit for Anchor Drilling

Operating pressure (kp/cm <sup>2</sup> )	170 - 190 bar
Oil flow rate (l/min)	70 - 80 lpm
Impact rate (min <sup>-1</sup> )	(50 Hz) 3,000 bpm
Single impact energy (Joule)	270 Nm

## Percussion Unit for Rock Drilling

Operating pressure (kp/cm <sup>2</sup> )	170 - 190 bar
Oil flow rate (l/min)	70 - 80 lpm
Impact rate (min <sup>-1</sup> )	(65 Hz) 4,000 bpm
Single impact energy (Joule)	240 Nm

## Shank Adaptors (Striker Bars)

Male thread	R32 left   R38 left   T38 left   T45 left R55(H55) right   R55(H55) left
Female thread	R32 left   R38 left   T38 left Titan 30/11 left   40/16 left

### OPTIONS

- External flushing head for casings and self-drilling hollow bars
- Integrated flushing through extended shank adaptor (striker bar)
- Drifter version without damping mechanism available
- Motor position could be on the left side or on top (right side position is not possible)

## Rotary Drives

Motor-Version HP110 ccm																	
Pressure at rotary drive		140bar				170bar				200 bar				240 bar			
Gear					1 <sup>st</sup>				1 <sup>st</sup>				1 <sup>st</sup>				1 <sup>st</sup>
Oil flow rate (lpm)	50	Torque (Nm)			700				850				1,000				1,200
		Speed (rpm)			143				138				131				139
	75	Torque (Nm)			700				850				1,000				1,200
		Speed (rpm)			208				213				191				181
	95	Torque (Nm)			700				850				1,000				1,200
		Speed (rpm)			255				248				240				228

Intermittend mode (max. 10% per minute)

Motor-Version HP160 ccm																	
Pressure at rotary drive		140bar				170bar				200 bar				240 bar			
Gear					1 <sup>st</sup>				1 <sup>st</sup>				1 <sup>st</sup>				1 <sup>st</sup>
Oil flow rate (lpm)	50	Torque (Nm)			1,000				1,300				1,500				1,800
		Speed (rpm)			95				92				88				83
	75	Torque (Nm)			1,000				1,300				1,500				1,800
		Speed (rpm)			138				134				130				124
	95	Torque (Nm)			1,000				1,300				1,500				1,800
		Speed (rpm)			173				169				164				157

■ Intermittend mode (max. 10% per minute)

Motor-Version HP245 ccm																	
Pressure at rotary drive		100bar				140bar				170bar				200 bar			
Gear					1 <sup>st</sup>				1 <sup>st</sup>				1 <sup>st</sup>				1 <sup>st</sup>
Oil flow rate (lpm)	50	Torque (Nm)			1,100				1,500				1,900				2,300
		Speed (rpm)			65				63				61				58
	75	Torque (Nm)			1,100				1,500				1,900				
		Speed (rpm)			94				91				88				
	95	Torque (Nm)			1,100				1,500				1,900				
		Speed (rpm)			118				115				112				

■ Intermittend mode (max. 10% per minute)

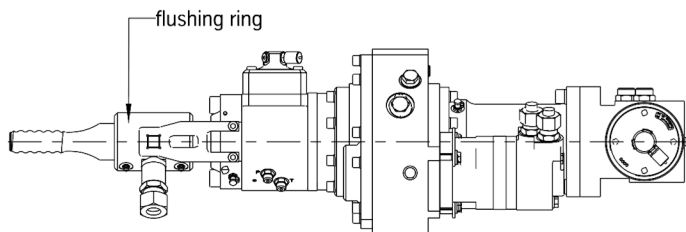
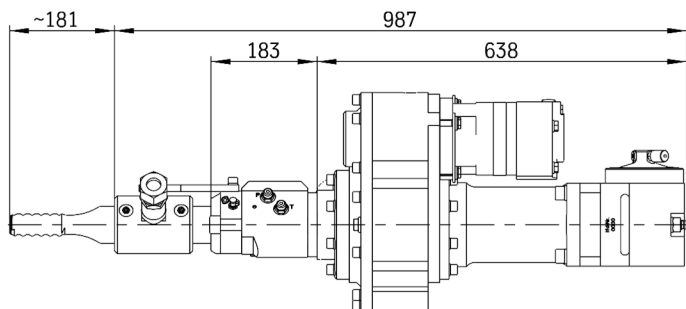
Motor-Version HP310 ccm																	
Pressure at rotary drive		70bar				100 bar				140bar				170 bar			
Gear					1 <sup>st</sup>				1 <sup>st</sup>				1 <sup>st</sup>				1 <sup>st</sup>
Oil flow rate (lpm)	50	Torque (Nm)			900				1,400				2,000				2,500
		Speed (rpm)			53				52				27				50
	75	Torque (Nm)			900				1,400				2,000				
		Speed (rpm)			75				74				73				
	95	Torque (Nm)			900				1,300				1,900				
		Speed (rpm)			94				793				92				

■ Intermittend mode (max. 10% per minute)

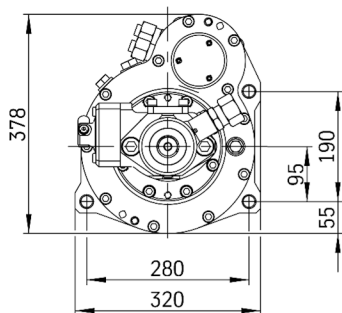
## Dimensions

### for Anchor-Drilling

with hydraulic damping mechanism and external flushing ring fitted to extended shank adaptor (swivel)



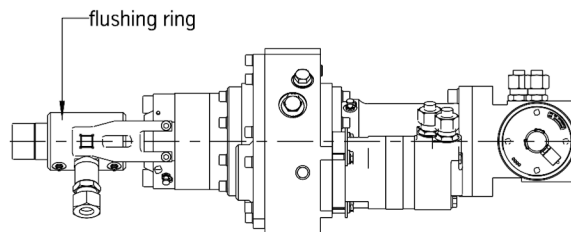
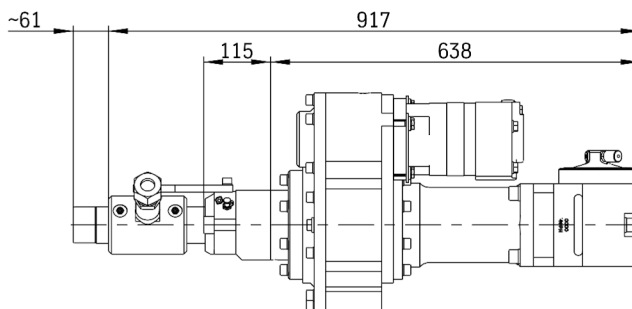
weight approx. 200 kg  
retraction force max. 36 kN



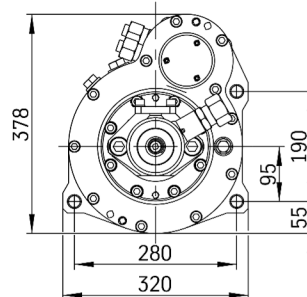
motor on top

### for Rock-Drilling

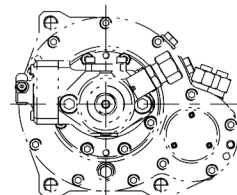
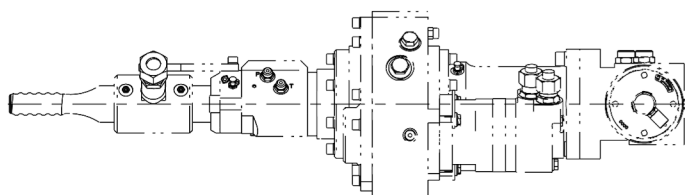
without hydraulic damping mechanism, but with external flushing ring fitted to extended shank adaptor (swivel)



weight approx. 190 kg  
retraction force max. 36 kN

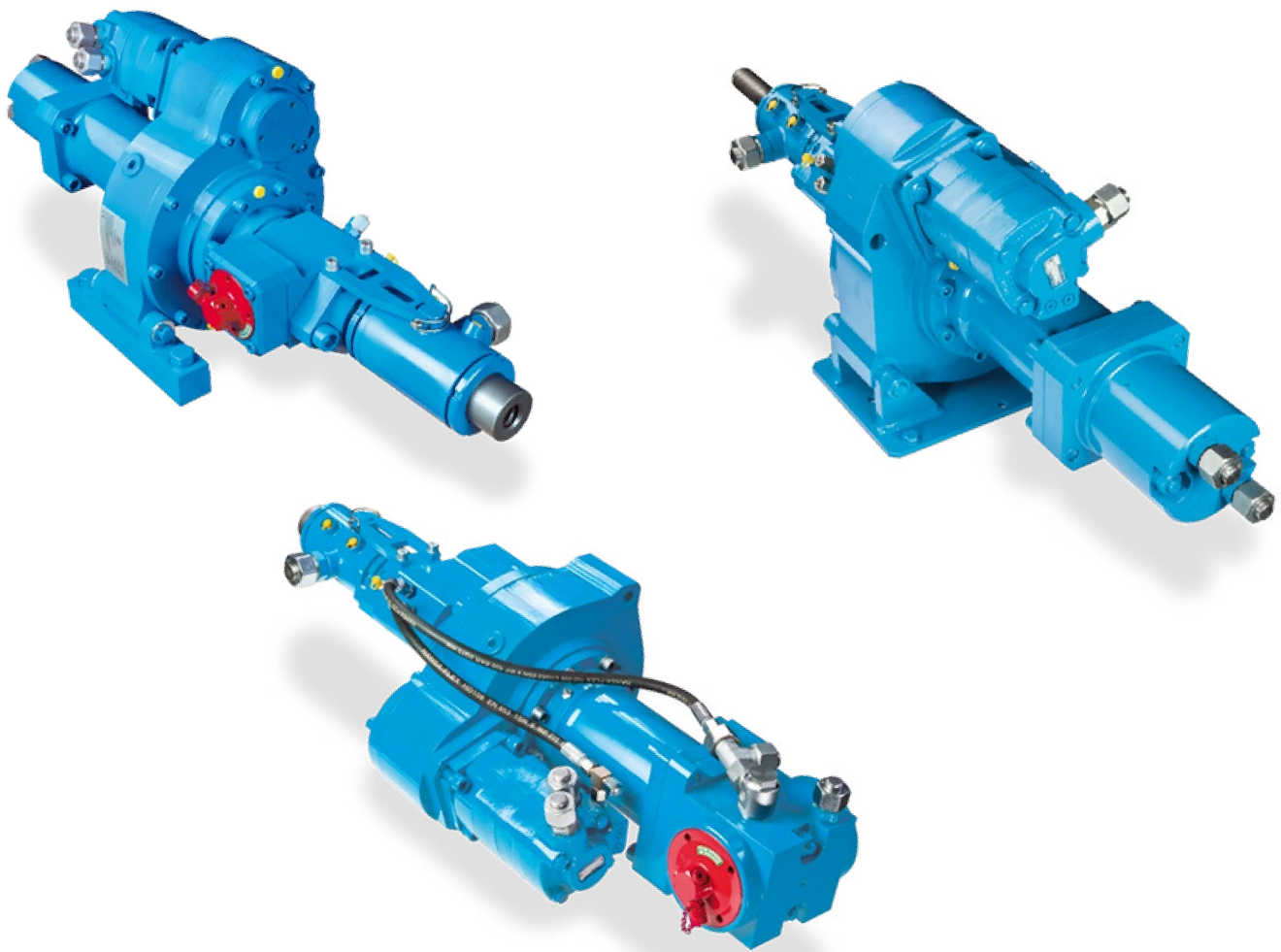


motor on top

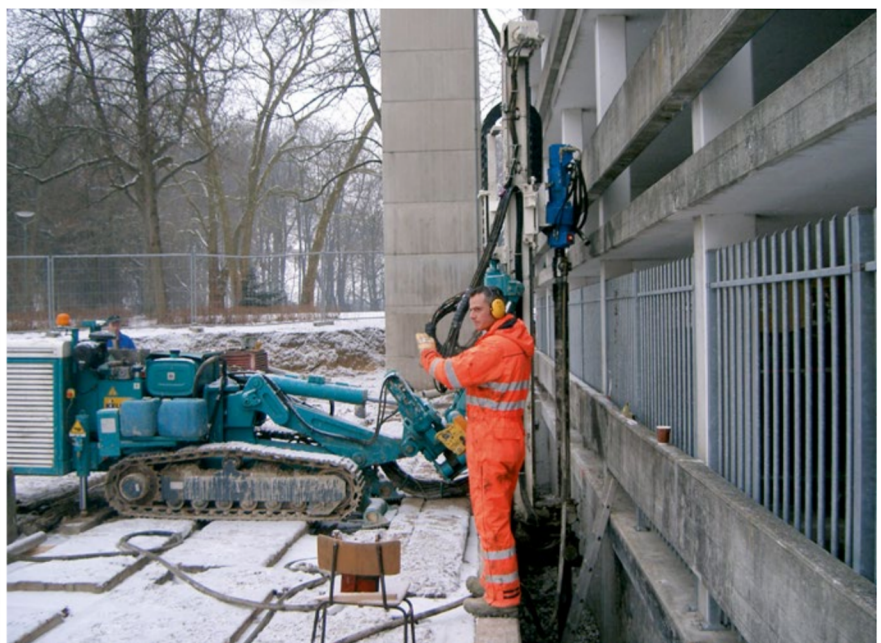


optional: motor on left side





HB15 drilling in a quarry



HB15 drilling  $\varnothing 101$  mm (4 inch) casings

terra infrastructure GmbH, Alte Liederbacher Straße 6, 36304 Alsfeld, Germany  
P: +49 6631 781-0  
sales.drilling@terra-infrastructure.com | www.terra-infrastructure.com

#### **Australia**

terra infrastructure Pty Ltd, 11 Woodford PI, Thornton NSW 2322, Australia  
P: +61 2 8448-3555  
info.anz@terra-infrastructure.com  
www.terra-infrastructure.com.au

#### **New Zealand, Pacific Islands**

terra infrastructure Pty Ltd, 180 Fred Taylor Drive, Whenuapai Auckland 0814, New Zealand  
P: +64 9 416-8891  
info.anz@terra-infrastructure.com  
www.terra-infrastructure.co.nz

#### **Baltic States**

terra infrastructure UAB, Liepų g. 83, 93269 Klaipėda, Lithuania  
P: +370 46 355-401  
www.terra-infrastructure.com/lt

#### **Russian Federation**

OOO terra infrastructure, Bolshevikov Str. 54 B, Office 211, 193315 St. Petersburg, Russia  
P: +7 812 337-6510  
www.terra-infrastructure.com/ru



terra  
infrastructure